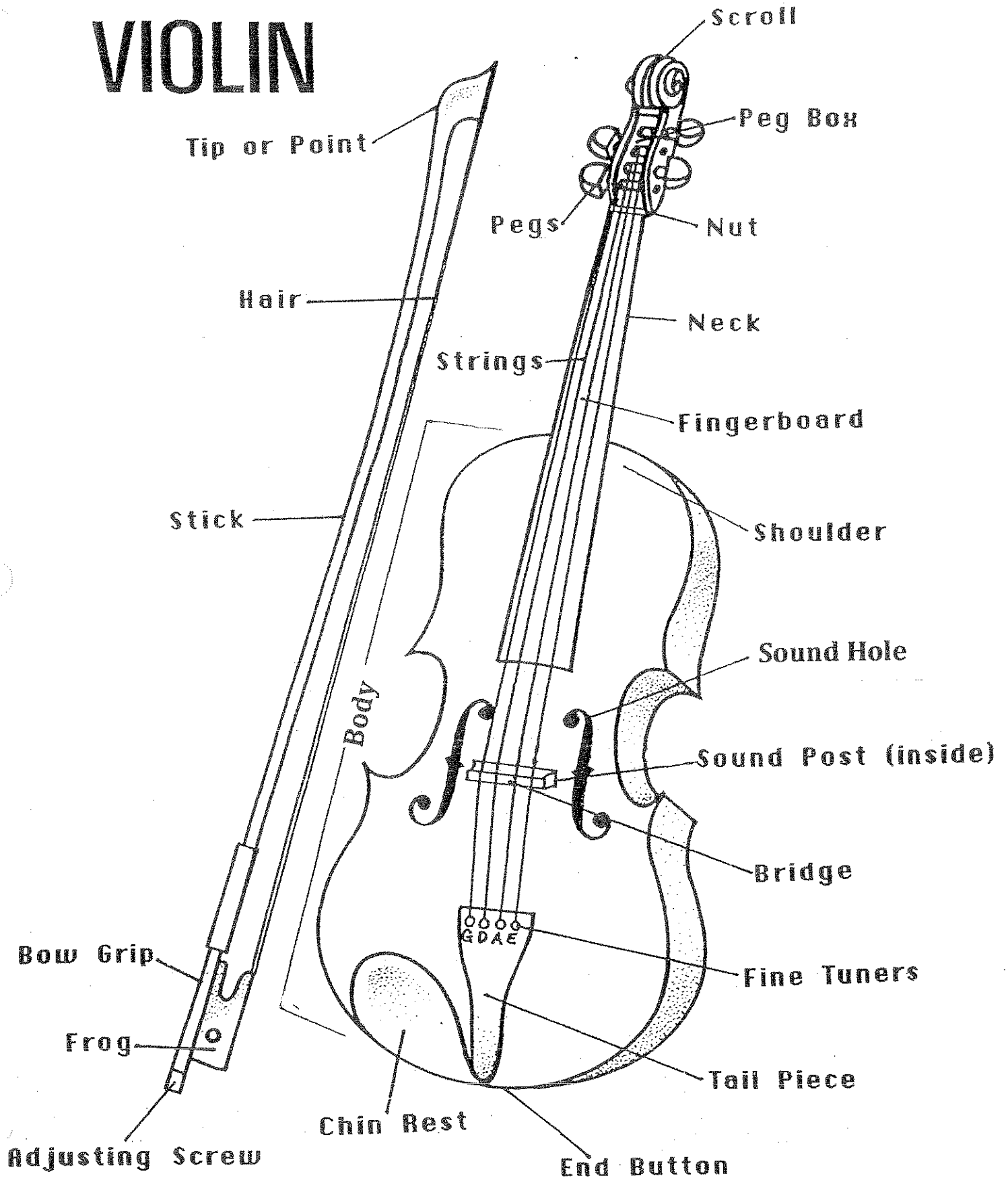
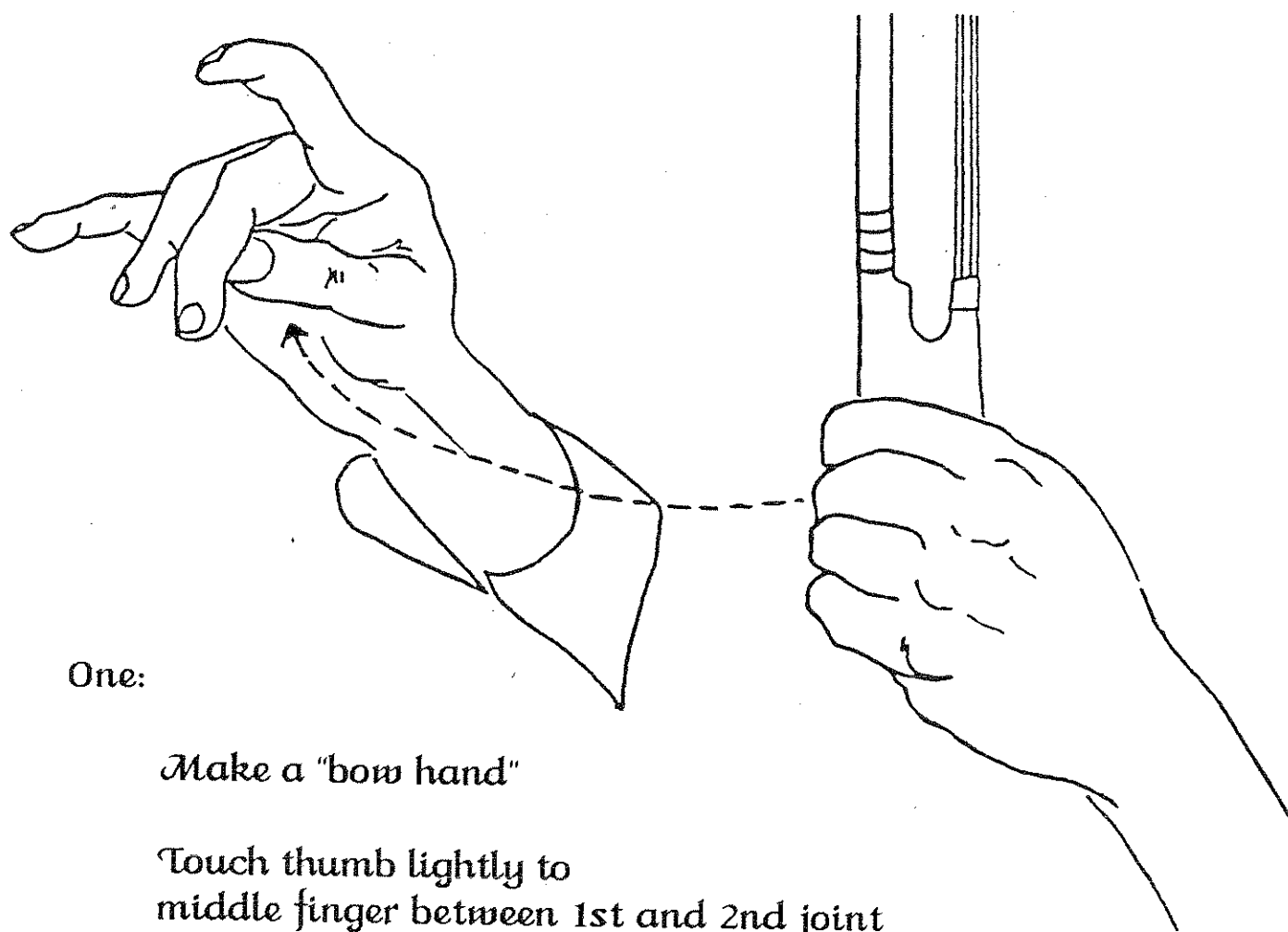


VIOLIN



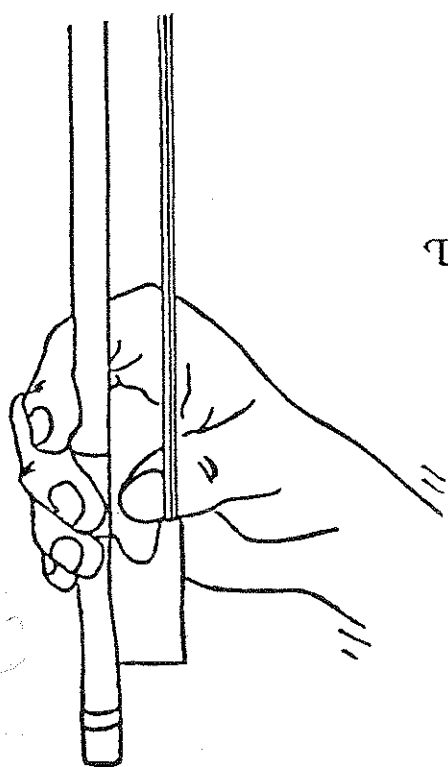
Bow Hold



One:

Make a "bow hand"

Touch thumb lightly to middle finger between 1st and 2nd joint



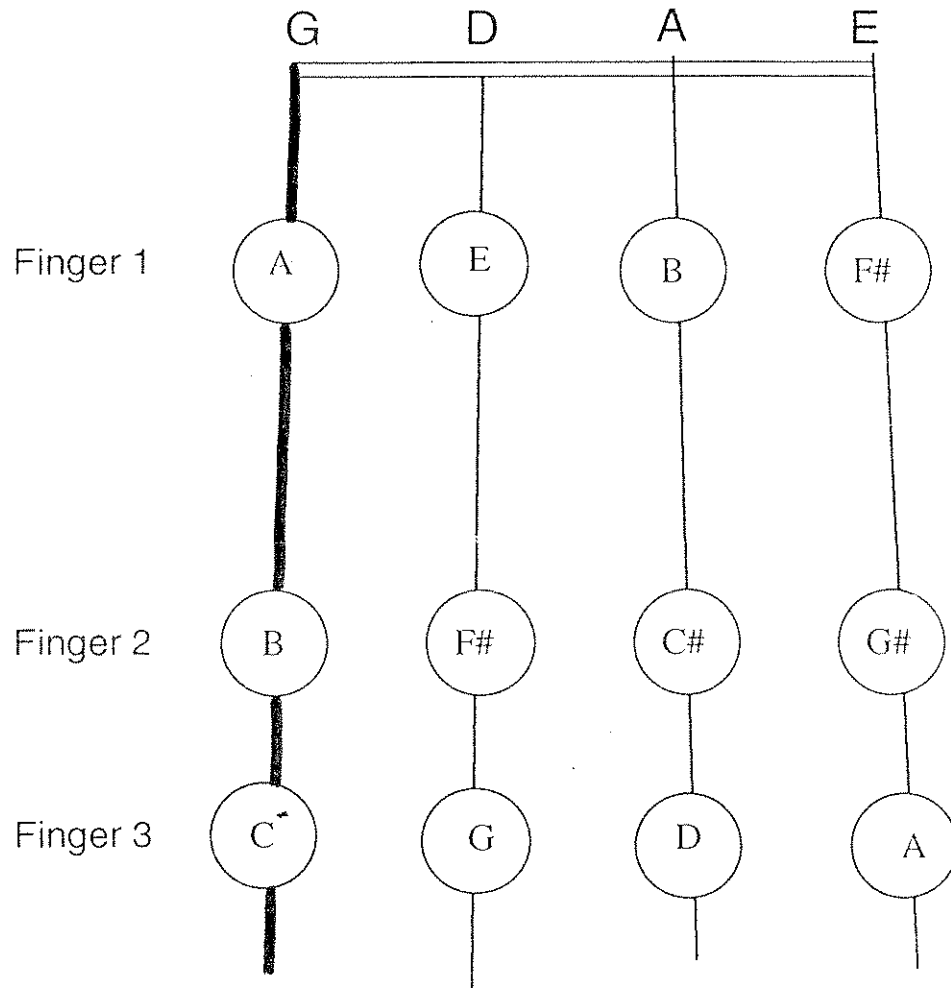
Two:

Fingers rest lightly over stick

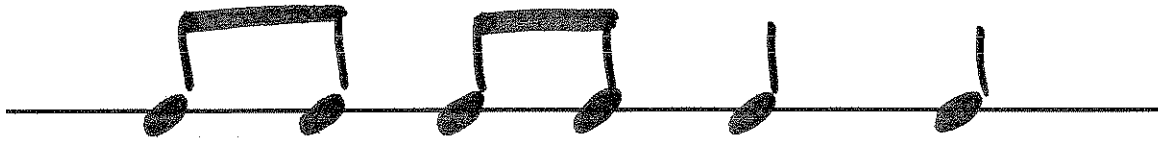
All fingers curved - tip of pinkie on top of stick

Relax wrist

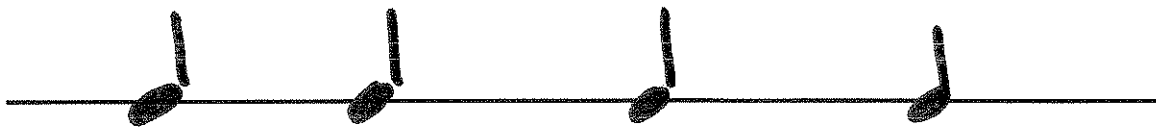
Violin Fingering Chart



Violin rhythms

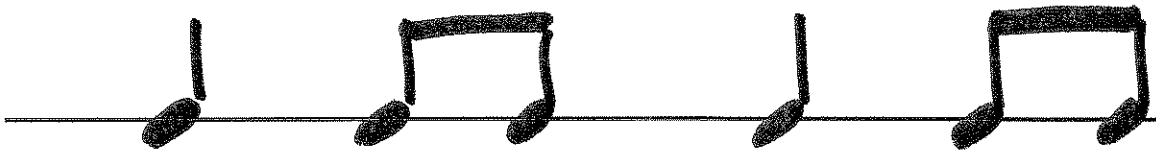


Mis - si - sip - pi Hot Dog



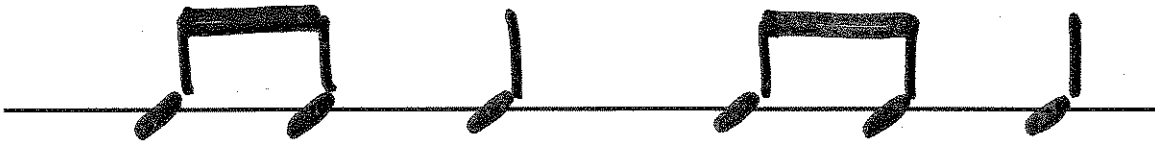
Pop - corn

Pop - corn



Ham - bur - ger

Ham - bur - ger



Bea - ver -- ton

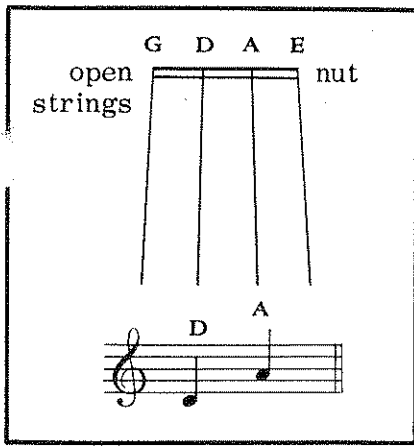
Bea - ver -- ton

THE TWO MIDDLE STRINGS

Draw the bow straight out without touching two strings.

▣ -- means down-bow. Start playing at the frog or the bottom of the bow.

∨ -- means up-bow. Start playing at the tip.



These are quarter notes. Each note receives one count.

The D String

1

Count 1 2 3 4 1 2 3 4

Count 1 2 3 4

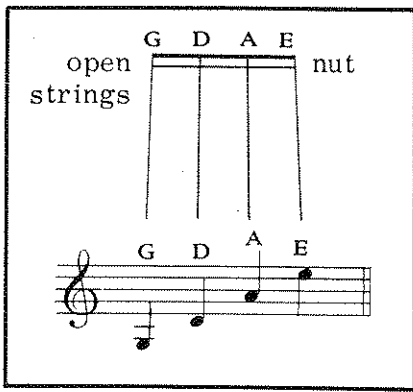
The A String

2

The D and A Strings

3

3A



THE TWO OUTER STRINGS

The G String

The G is the lowest string. Raise your right arm.

4

Count 1 2 3 4

Three Strings

5

High arm a bit lower still lower

Starting on A

The E String

The E is the highest string. Lower your right arm close to the body.

6

Each String Twice

7

The Other Way

THE OPEN STRINGS WITH HALF NOTES

These are half notes (♩). Each note receives two counts.

Move the bow a bit slower for the half notes.

These numbers are called the Time Signature $\left\{ \begin{array}{l} 4 - \text{The top number tells us there are 4 counts to each measure.} \\ 4 - \text{The bottom number tells us a quarter note receives one count.} \end{array} \right.$

The bars | | divide the staff into measures.

The D String

Count 1 2 3 4

The A String

The G String

The E String

Playing with our Teacher

A down or up-bow is placed in the middle of each line to serve as a starting or stopping measure.

Play Ball!

WHOLE NOTES (o)

Each whole note receives 4 counts. Move the bow slowly.

A double bar ends the piece

11

Count 1 2 3 4

Two Halves and a Whole

Move the bow a bit faster for the half notes.

12

Count 1 2 3 4 1 2 3 4

Our Theme Song - Lightly Row

GERMAN FOLK SONG

13

Count 1 2 3 4 1 2 3 4

One Long and Four Shorts

Move the bow faster for the quarter notes.

14

Count 1 2 3 4 1 2 3 4

Four Shorts and One Long

Count 1 2 3 4 1 2 3 4

The Whole Rest (on the 4th line)

It is called a rest because we do not play. The whole rest receives 4 counts.

Gaily the Troubadour

Leave the bow on the string during the rest.

THOMAS H. BAYLY

15 p

Count 1 2 3 4 1 2 3 4

Mary Had A Little Lamb

TRADITIONAL

16 p

Count 1 2 3 4 1 2 3 4