

# Violin Quiz Study Sheet

Name: \_\_\_\_\_

- Be able to label the four “strings” on a picture of the violin neck.  
(Use a little saying, "Good Dogs Always Eat" or “Go Down and Eat” to remember their order.)

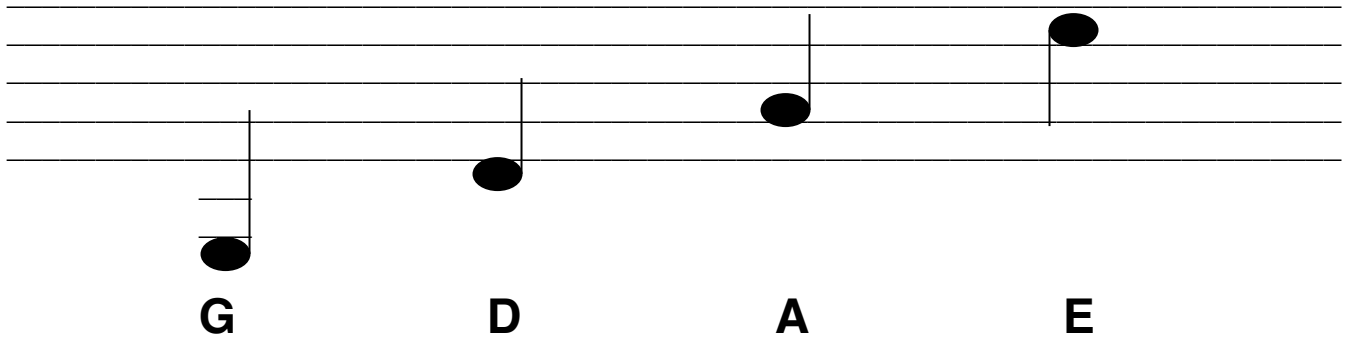
1<sup>st</sup> string..... = G

2<sup>nd</sup> string..... = D

3<sup>rd</sup> string..... = A

4<sup>th</sup> string..... = E

- Find the notes for each open string on the staff:



- Even though you keep your left hand under the neck to keep the violin from falling, what other body part is helping to support the weight of the violin? (chin)

- Which hand holds the bow? (right hand)

- The proper posture is to stand with which foot forward? (left foot)

- Line these up: **NOSE – BRIDGE – ELBOW – KNEE – TOES**

- What two things do you need to get the bow ready for playing?

\_\_\_\_(tighten the bow hair)\_\_\_\_\_ and \_\_\_\_\_(put rosin on the bow)\_\_\_\_\_

- What do you need to do before you put the bow away? \_\_\_\_\_(loosen the bow hair)\_\_\_\_\_

- Know what the notes look like that last this long:

1 beat = 

2 beats = 

4 beats = 